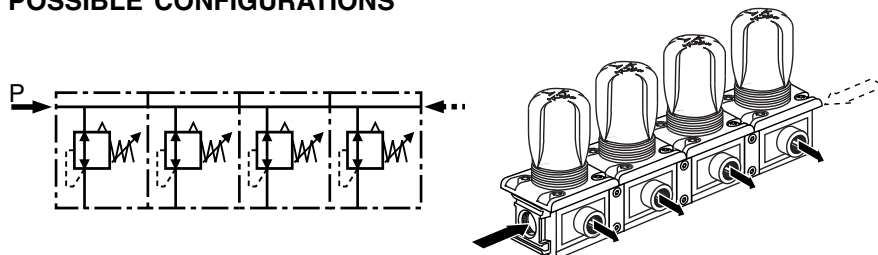


FEATURES

- Joinable modular pressure regulator for supplying different circuits at different pressures from a common supply
- Compact and economical directly joinable units
- No pipework or couplings between regulators
- High flow, low hysteresis
- Joinable to main supply line, any FRL or Modulair 112 type accessories, quick and easy extension
- This material exists in version intended for use in potentially **explosive atmospheres** caused by gases or dusts - ATEX directive 94/9/CE (see ATEX option)

POSSIBLE CONFIGURATIONS



- Supply connection at left-hand and/or right-hand side
- Possibility of having supplies with two different pressures, by placing a blanking plate at the appropriate point
- Other configurations are possible, consult us

GENERAL SPECIFICATION

FLUID : Filtered or neutral gas or compressed air
 PORTS : G1/2 (inlet ports G1/2)
 MAX. INLET PRESSURE : 16 bar
 ADJUSTMENT RANGE : 0.5 - 10 bar, 0.2 - 3 bar
 AMBIENT TEMPERATURE : -10°C to +60°C
 MAX. FLOW (Qv at 6.3 bar) : 5400 l/min (ANR)
 HYSTERESIS : 0.2 bar
 SELF-RELIEVING REGULATOR

CONSTRUCTION

Regulating device with a **rolling** diaphragm (very low hysteresis)
 Core and seals of nitrile (NBR)
 Body of painted zamak
 Locking "Pull-Turn-Push" pressure control knob
 One G1/8 port is provided for a pressure gauge on the side opposite the load port

INSTALLATION

Combined with separately ordered assembly kits.

Regulators can be installed in any position, mounting options:

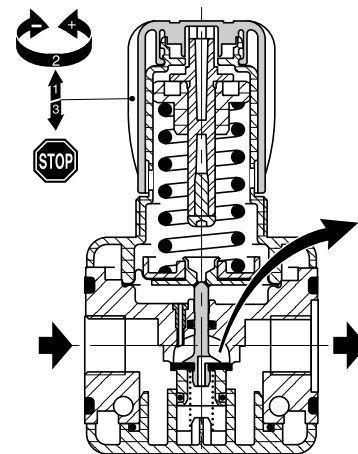
- Direct mounting on support with two 5 mm dia. screws (screws not included)
- Mounting with two side brackets (see accessories)
- Panel mounting (37.5 mm dia.) with mounting rings (see accessories)

CHOICE OF EQUIPMENT

pipe size		max. inlet pressure	controlled pressure	max. flow		code (1)		
outlet	common inlet			at 6.3 bar pressure setpoint and ΔP of 1 bar/setpoint		regulator		
		(bar)	(bar)	l/min (ANR)	dm³/s (ANR)	Ø gauge	with pressure gauge	without pressure gauge
Adjustment range: 0.5 - 10 bar							(manomètre 0-12 bar)	
G1/2	G1/2	16	0,5-10	5400	50	50	34203767	34203765
Adjustment range: 0.2 - 3 bar							(manomètre 0-4 bar)	
G1/2	G1/2	16	0,2-3	5400	50	50	34203763	34203761

(1) Assembly kits are not supplied with regulators but must be ordered separately, code **34303001** (quantity: number of regulators minus 1)

ACCESSORIES AND OPTIONS (see overleaf)

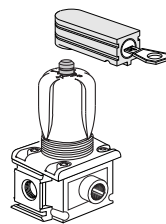


H

ACCESSORIES see page 42

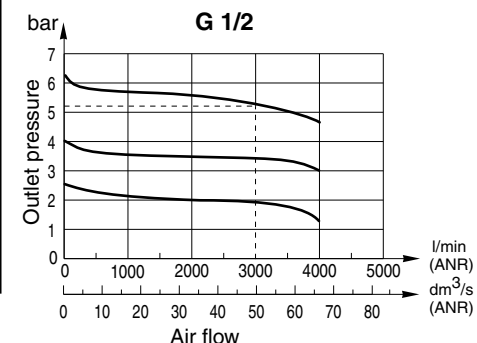
OPTIONS

- Key locking device mounted on adjustment knob
- supplied **installed** on regulator, code: **662554**.
Others options or accessories, see page 46
- Adjustment range 0.5 to 12 bar (provide for 50 mm dia. 0-16 bar pressure gauge)
- Equipment for use in potentially **explosive atmospheres** caused by dusts or gases (ATEX Directive 94/9/EC)



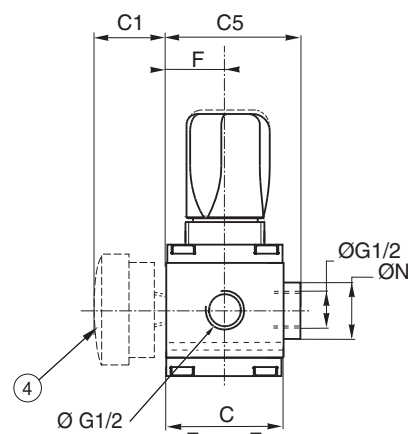
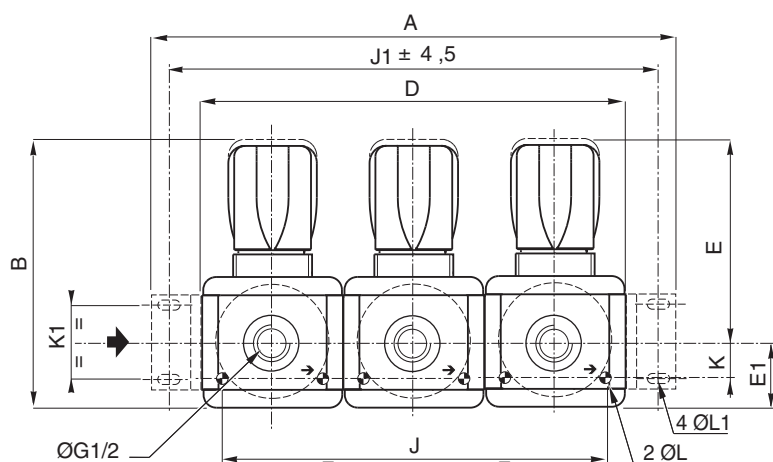
zones	classification 	groupe de gaz	code option ATEX
2-22	II3GD c T 85°C (T6)	IIA-IIIB-IIC	612021
1-21	II2GD c IIC T85°C (T6)	IIC	612062

JOINABLE REGULATOR AIRFLOW CHARACTERISTIC CURVE TYPE: MODULAIR 112



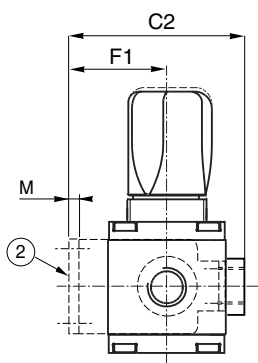
DIMENSIONS AND WEIGHTS

Direct frontal mounting ①

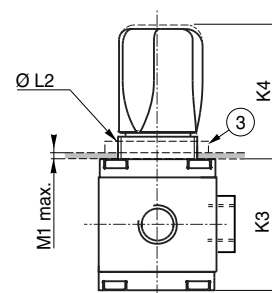


range	Modulair 112
B	125
C	55
C1	31,5
C2	84
C5	65,5
E	94,5
E1	30,5
F	27,5
F1	46
K	17
K1	33,5
K3	61
K4	64
ØL	5,5
ØL1	5,5
ØL2	M 37x 2
M	4
M1	2
ØN	28

Mounting with side brackets



Panel mounting
hole dia. for Modulair 112 = Ø37.5



	number of regulators combined				
	2	3	4	5	+1
A	188	254	320	386	66
D	132	198	264	330	66
J	111	177	243	309	66
J1	162	228	294	360	66
Weight (1) kg	1,400	2,100	2,800	3,500	0,700

(1) Weight without pressure gauge (pressure gauge weight: 0.070 kg)

- ① Direct frontal mounting: 2 holes of dia. L and depth C
- ② Mounting with two side brackets (accessory)
- ③ Top mounting ring (accessory)
- ④ 50 mm dia. pressure gauge