

### PRESENTATION

- Resistance to high temperatures (+50°C)
- Resistance to impact, UV light and solvents
- Bowl always locked in place during operation
- high levels of filtration (CLARIFI AIR systems)
  - of solid particles (0.01 µm),
  - aerosols of oil and water (0.01 ppm).

### SPECIFICATION

FLUID	: Compressed air or neutral gas
PORTS	: G 1/4, G 3/8 and G 1/2
MAX. INLET PRESSURE	: 12 bar at 50°C
AMBIENT TEMPERATURE	: +1.5°C to +50°C
MAX. FLOW (Qv at 6.3 bar)	: see table below
SELF-RELIEVING PREFILTER/REGULATOR	

### COMPOSITION OF SYSTEMS

#### PREFILTER + SUBMICRON FILTER SYSTEM

Consisting of a 5 µm capacity prefilter and a 0.01 µm capacity submicron filter (see opposite)

#### PREFILTER/REGULATOR + SUBMICRON FILTER SYSTEM

Consisting of a 5 µm capacity prefilter/regulator (no pressure gauge) and a 0.01 µm capacity submicron filter  
Controlled pressure: 0,5 to 10 bar (other adjustment range, in option)

### INDIVIDUAL SPECIFICATION

FILTERING CAPACITY : 0.01 µm  
SEMI-AUTOMATIC DRAIN (operating pressure: 1.2 to 12 bar)

### CONSTRUCTION

#### PREFILTER or PREFILTER/REGULATOR

- Zamak body
- Polyethylene (P-E) 5 µm filtering element

#### SUBMICRON FILTER

- Zamak body
- 0.01µm coalescent filtering element

#### ALL MODELS

- Aluminium bowl and with semi-automatic drains (automatic and manual drains on request)
- Max. condensate level sight glass

### INSTALLATION - MAINTENANCE

Systems must be installed with the bowls in vertical position  
Air flow direction indicated by arrow  
Both products include a special Clarifi air assembly kit

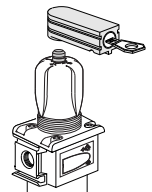
### CHOICE OF EQUIPMENT

MODULAIR type	port size	bowl capacity		maximum flow at 6.3 bar max. ΔP: 0.350 bar		code system	
		totale (cm³)	utile (cm³)	l/min (ANR)	dm³/s (ANR)	prefilter + Submicron filter with semi-automatic drains	prefilter/regulator + Submicron filter (no pressure gauge) with semi-automatic drains
<b>Metal bowl WITHOUT visualization</b>							
112	G1/4	114	40	1050	17,5	34203885	34203879
	G3/8	114	40	1050	17,5	34203886	34203880
	G1/2	114	40	1050	17,5	34203887	34203881
<b>Metal bowl WITH visualization</b>							
112	G1/4	114	40	1050	17,5	34203918	34203912
	G3/8	114	40	1050	17,5	34203919	34203913
	G1/2	114	40	1050	17,5	34203920	34203914

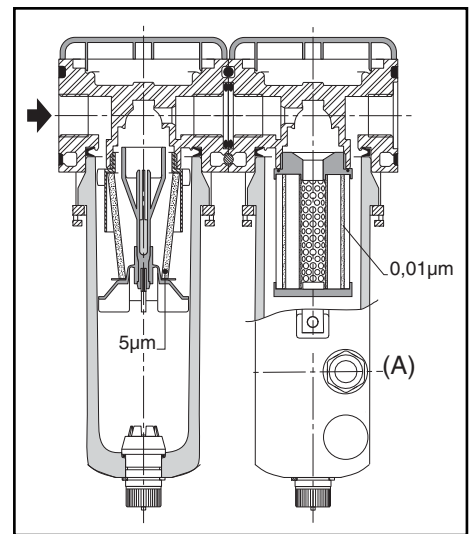
### ACCESSORIES (see page P710-41)

### OPTIONS

- Automatic drains (operating pressure: 2 to 10 bar)
- Manual drains (Modulair 112 - fits on semi-automatic drains only)
- Prefilter/regulator:
  - Adjustment range 0.2 to 3 bar or 0.5 to 12 bar
  - Key locking device for adjustment knob attached to knob, code **662 554** (supplied installed)
- For filter, filter/regulator
  - Metal bowl with 2 glass visualization windows, code: **662594**
  - Metal bowl with 2 polyamide visualization windows, code: **662596**
- Equipment for use in potentially **explosive atmospheres** caused by dusts or gases (ATEX Directive 94/9/EC)



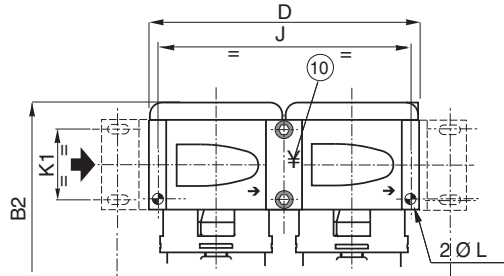
zones	classification	gas group	ATEX option code
2-22	II3GD c T 85°C (T6)	IIA-IIB-IIC	612022
1-21	II2GD c IIC T85°C (T6)	IIC	612063



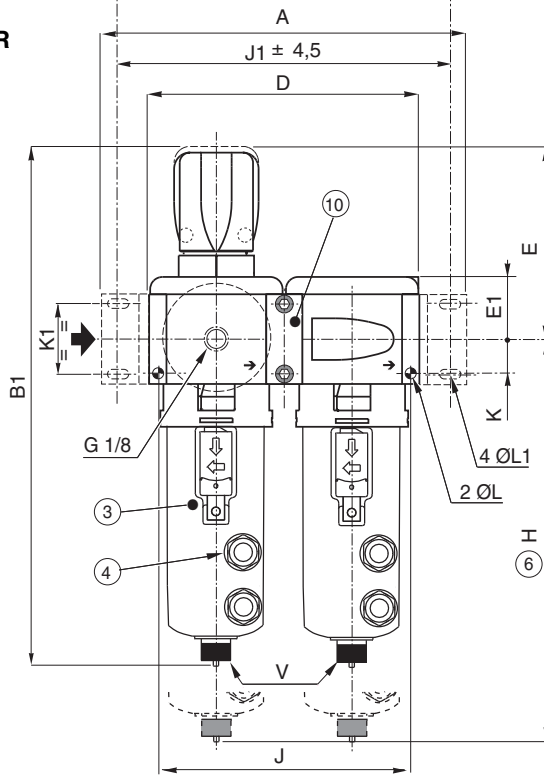
(A) Max. condensate level sight glass

### DIMENSIONS AND WEIGHTS

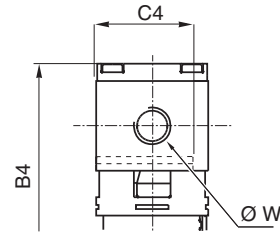
#### PREFILTER + SUBMICRON CLARIFIAIR FILTER SYSTEM



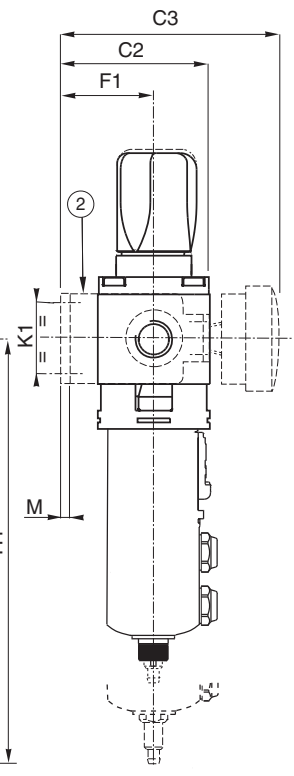
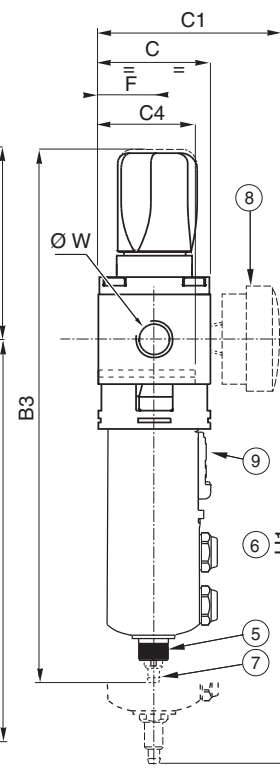
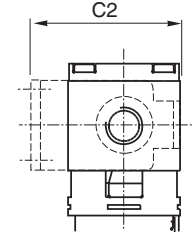
#### PREFILTER/REGULATOR + CLARIFIAIR SUBMICRON FILTER SYSTEM



#### Direct front mounting ①



#### Mounting with brackets



Range	Modulair 112
Ø W	G1/4
	G3/8
	G1/2
bowl (cl)	12
A	178
B1	250,5
B2	191
B3	262,5
B4	202
C	55
C1	87
C2	73,5
C3	105
C4	47,5
D	132
D1	66
E	94,5
E1	65
F	27,5
F1	46
H	221,5
H1	232,5
J	123
J1	162
K	17
K1	33,5
ØL	5,5
ØL1	5,5
M	4
ØT	G3/8
V	G1/8

- ① Direct frontal mounting: 2 holes of dia. L and depth C4
- ② Mounting with 2 side brackets (accessory)
- ③ Metal bowl
- ④ Max. condensate level window
- ⑤ G 1/8 connectable semi-automatic drain
- ⑥ Clearance necessary for removing bowls
- ⑦ Automatic drain with fitting for connection of 6 mm ID hose (Modulair 112 range)
- ⑧ 50 mm dia. pressure gauge

- ⑨ Protector unlocking button
- ⑩ Special Clarifiair assembly kit - code: **34303002**
- ⑪ By-pass module available as an accessory: 3 air ports (dia. T) at front, bottom and back, supplied with 2 pre-installed plugs  
Adjustable pressure switch to be fitted on top. Add the value D1 to dimensions A, D, J and J1 (see below)

NOTE: To install by-pass module, procure one additional standard assembly kit ⑫ code: **34303001**

weight (kg)	
prefilter + clarifiair Submicron filter	prefilter/regulator + clarifiair Submicron filter
Modulair 112	Modulair 112
1,450 <sup>(1)</sup>	1,580 <sup>(1)</sup>
1,610 <sup>(2)</sup>	1,740 <sup>(2)</sup>

(1) Weight without pressure gauge  
(2) Weight without pressure gauge and with automatic drains

