



SHORT STROKE CYLINDERS K type

SINGLE ACTING Ø 12 to 63 mm
DOUBLE ACTING Ø 12 to 100 mm
intended for magnetic position detectors

CHARACTERISTICS

Fluids	air or neutral gas, filtered, lubricated or not
Operating pressure	max. 10 bar
Temperature	-10°C to +60°C
Tube	light alloy
Rod	stainless steel or chrome-plated
Piston seals	PUR (polyurethane)
Cushioning	not cushioned
Connection	M5 (Ø 12 - 16 mm) G1/8 (Ø 20 - 63 mm) G1/4 (Ø 80 - 100mm)

- Reduced dimensions**
- Adapted to suit flange-mounted applications**
- Ease of assembly: mounting at front or rear with screws (smooth or threaded holes)**

YOUR SELECTION

Ø mm	stroke mm	reference	code	Ø mm	stroke mm	reference	code	Ø mm	stroke mm	reference	code
single acting Ø 12 to 63 mm rod retracted into rest position				16	25	K16 D 25-M	44100175	50	20	K50 D 20-M	44100207
12	10	K12 S 10-M	44100004	20	10	K20 D 10-M	44100025		25	K50 D 25-M	44100034
16	10	K16 S 10-M	44100006		15	K20 D 15-M	44100179		40	K50 D 40-M	44100209
	25	K16 S 25-M	44100156		20	K20 D 20-M	44100180		50	K50 D 50-M	44100210
20	10	K20 S 10-M	44100008		25	K20 D 25-M	44100026		80	K50 D 80-M	44100212
	25	K20 S 25-M	44100157	25	10	K25 D 10-M	44100027	10	K63 D 10-M	44100035	
32	10	K32 S 10-M	44100012		15	K25 D 15-M	44100185	20	K63 D 20-M	44100214	
	25	K32 S 25-M	44100013		20	K25 D 20-M	44100186	25	K63 D 25-M	44100036	
40	10	K40 S 10-M	44100014	32	25	K25 D 25-M	44100028	63	30	K63 D 30-M	44100215
	25	K40 S 25-M	44100015		10	K32 D 10-M	44100029		40	K63 D 40-M	44100216
50	10	K50 S 10-M	44100016		15	K32 D 15-M	44100191		50	K63 D 50-M	44100217
	25	K50 S 25-M	44100017	20	K32 D 20-M	44100192	80		K63 D 80-M	44100219	
63	10	K63 S 10-M	44100018	40	25	K32 D 25-M	44100030		80	10	K80 D 10-M
	25	K63 S 25-M	44100019		40	K32 D 40-M	44100194	25		K80 D 25-M	44100037
double acting Ø 12 to 100 mm				50	10	K50 D 10-M	44100033	30		K80 D 30-M	44100223
12	10	K12 D 10-M	44100023	50	10	K40 D 10-M	44100031	40		K80 D 40-M	44100224
	15	K12 D 15-M	44100168		20	K40 D 20-M	44100200	50		K80 D 50-M	44100225
16	20	K12 D 20-M	44100169		25	K40 D 25-M	44100032	100	K80 D 100-M	44100262	
	10	K16 D 10-M	44100024		40	K40 D 40-M	44100202	100	10	K100 D 10-M	44100244
15	K16 D 15-M	44100173	50		K40 D 50-M	44100203	30		K100 D 30-M	44100248	
20	K16 D 20-M	44100174	80	K40 D 80-M	44100205	50	K100 D 50-M		44100250		
								100	K100 D 100-M	44100253	

DIMENSIONS

(see page 31)

OPTIONS AND ACCESSORIES

Position indicators
(see page 50)



Flow regulators
(see page 108)



Other strokes and
diameters

Hollow through rod
version

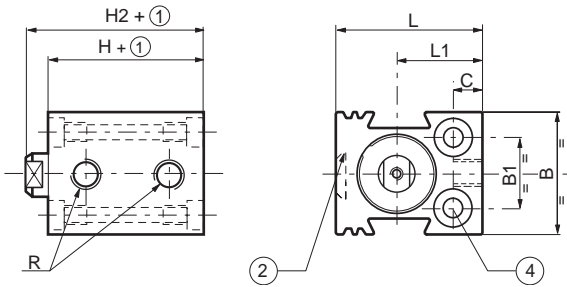


SHORT STROKE CYLINDERS - K type AND COMPACT CYLINDERS - PEC type

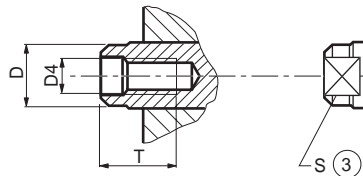
DIMENSIONS

Short stroke cylinders, K type

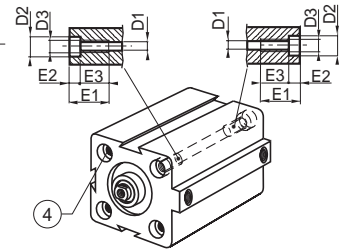
Ø 12 to 25 mm single and double acting



details cylinder rod Ø 12 to 100 mm

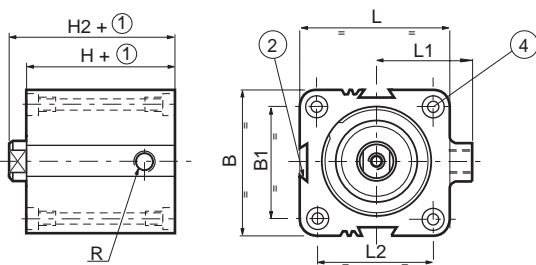


mounting holes

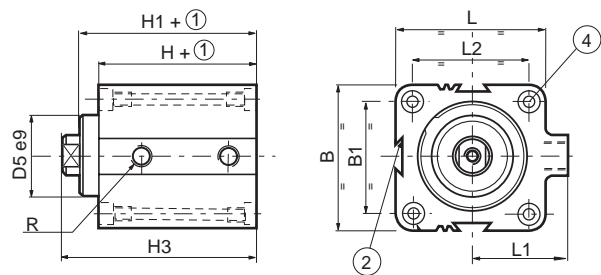


- ① : Stroke
- ② : 3rd groove on Ø 16 to 100 mm
- ③ : Dimension of flat surface
- ④ : Mounting holes and counterbores

Ø 32 to 63 mm single acting

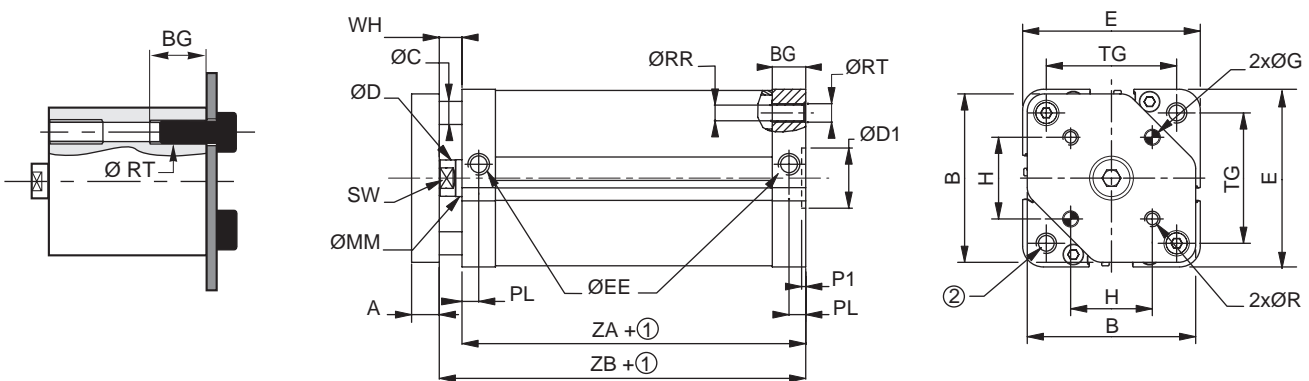


Ø 32 to 100 mm double acting



Ø mm	B	B1	C	D	D1	D2	D3	D4	D5	E1	E2	E3	H	H1	H2	H3	L	L1	L2	R	S	T
12	23	13	6,5	4	3,4	6	M4	M 2,5	-	12	3,4	8,6	24	-	25	-	27,5	18,5	-	M 5	-	3,5
16	28	18	8	7,8	4,5	8	M5	M 4	-	15	4,6	10,4	32	-	36,5	-	34	20	-	M 5	6	8
20	32	20	9	9,8	5,5	10	M6	M 5	-	18	5,7	12,3	32	-	36,5	-	40	24	-	G 1/8	8	11
25	38	26	9	9,8	5,5	10	M6	M 5	-	18	5,7	12,3	38,5	-	44	-	44	25	-	G 1/8	8	11
32	45	32	-	11,8	5,5	10	M6	M 6	26	18	5,7	12,3	39,5	44,5	45	50,5	48	32	36	G 1/8	10	12
40	55	42	-	11,8	5,5	10	M6	M 6	28	18	5,7	12,3	39,5	45,5	46	52	55	37,5	42	G 1/8	10	12
50	65	50	-	15,8	6,6	11	M8	M 8	34	20	6,8	13,2	39,5	45,5	47	53	65	42,5	50	G 1/8	13	14
63	80	62	-	15,8	8,6	15	M10	M 8	38,5	25	9	16	42	50	48,5	57,5	80	47,5	62	G 1/8	13	14
80	100	82	-	19,8	8,6	15	M10	M 10	44	25	9	16	46	56	54	64	100	60	82	G 1/4	17	16
100	124	103	-	24,8	10,25	18	M12	M 12	56	30	11	19	56	66,5	66	76,5	124	72	103	G 1/4	22	20

Compact PEC type cylinders with anti-rotation device



① : Stroke

Ø mm	A	B	BG	C	D	D1	E	EE	G	H	MM	P1	PL	R	RR	RT	SW	TG	WH	ZA	ZB
20	8	30,5	15	5	9,8	12	36	M5	4	12	10	2,5	10	M4	4,5	M5	8	22	6	37	43
25	8	36,5	15	6	9,8	12	40	M5	5	15,6	10	2,5	10	M5	4,5	M5	8	26	6	39	45
32	10	45,3	16	8	11,8	14	47	G1/8	5	19,8	12	2,5	7,5	M5	6	M6	10	32,5	7	44	51
40	10	51	16	8	11,8	14	55	G1/8	5	23,3	12	2,5	7,5	M5	8	M6	10	38	7	45	52
50	12	62	16	10	15,8	18	65	G1/8	6	29,7	16	2,5	7,5	M6	10	M8	13	46,5	8	45	53
63	12	73	16	10	15,8	18	77	G1/8	6	35,4	16	2,5	7,5	M6	10	M8	13	56,5	8	49	57
80	14	91	17	12	19,8	23	95	G1/8	8	46	20	3	8,5	M8	14	M10	16	72	10	54	64
100	16	111	20	12	24,8	28	115	G1/8	10	56,6	20	3	10	M10	15	M10	21	89	10	67	77